

ELECTRIC DEADBOLT

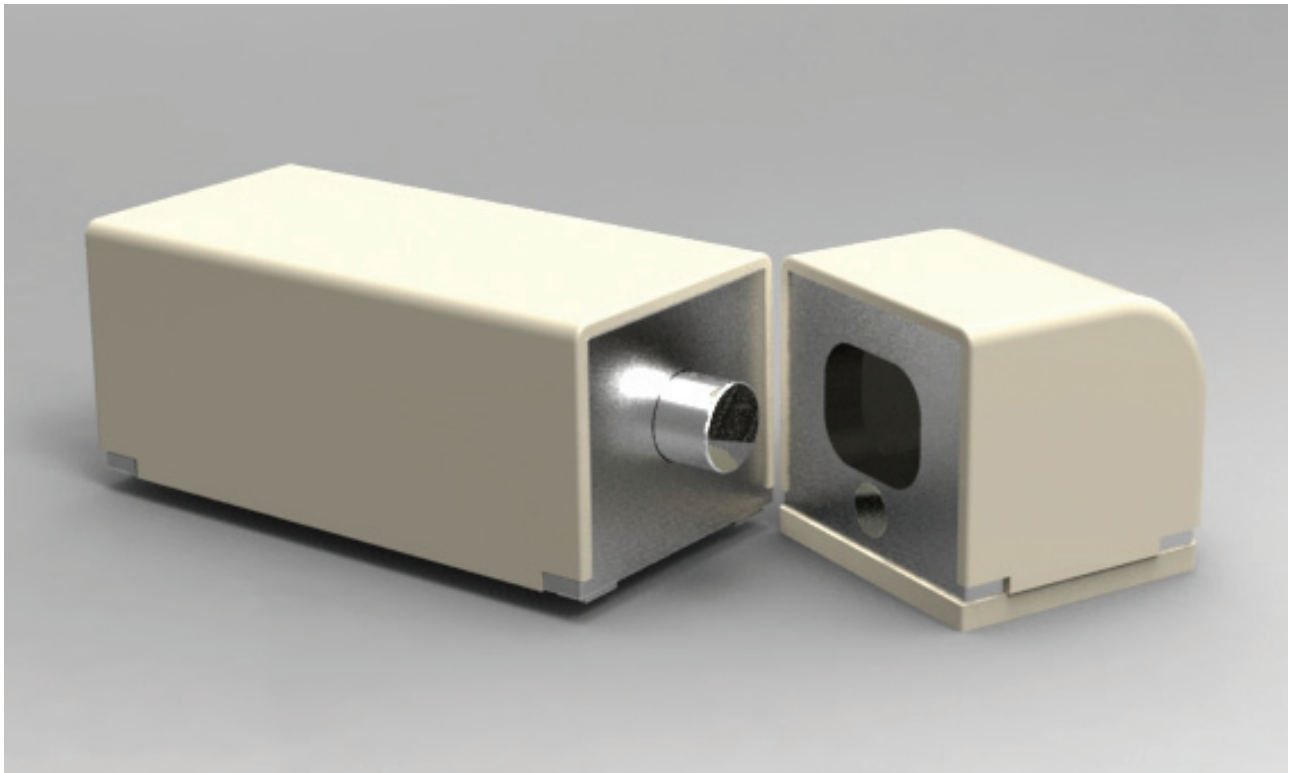
GD-100

Product synopsis

Electric deadbolt is a locking device controlling the door by disabling the electricity. It is used for locker and mail box.

GD-100 is a fail safe type and it unlocks when the electricity is disconnected.

GD-100



■ Specifications

ITEM		Spec
12DCV	Voltage / Current	12DCV / 310mA
	Voltage allowable range	DC 10.8V ~ DC 15V
	Current allowable range	279mA ~ 388mA

■ Function

- Exposed type

■ Dimensions

