

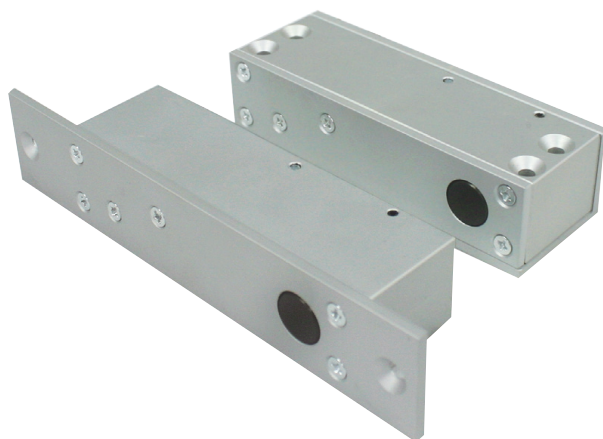
ELECTRIC DEADBOLT

GD-2000

Product synopsis

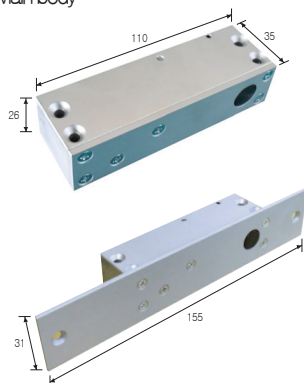
GD-2000 is an electric deadbolt widely used for swinging doors, fire doors, and timber doors. Users can choose whether to conceal it or reveal. It unlocks when power is disconnected.

GD-2000

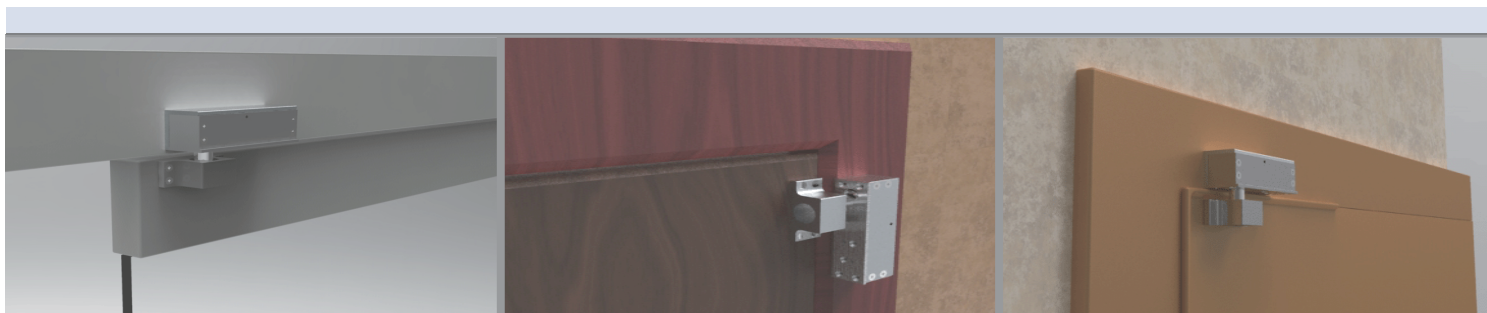


■ Dimensions

• Main body



■ Installation image



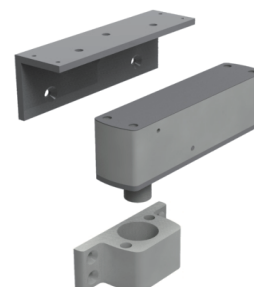
■ Specifications

Item	Spec	
Voltage	DC 12V $\pm 20\%$ DC 17V $\pm 20\%$	
Current	DC 12V / 480mA $\pm 10\%$ DC 17V / 380mA $\pm 10\%$	
Allowable range	390 ~ 580mA (DC 12V) 310 ~ 460mA (DC 17V)	
Operating status	Power off	remain open
	Power on	remain closed

■ Components

- Main body (Revealed)
Size : 110×35×26
Weight : 220g
- Main body (Concealed)
Size : 155×35×31
Weight : 238g

■ Installation image



■ Assembled glass type case

• upper part



• lower part

