

ELECTRIC STRIKE

GS-9000

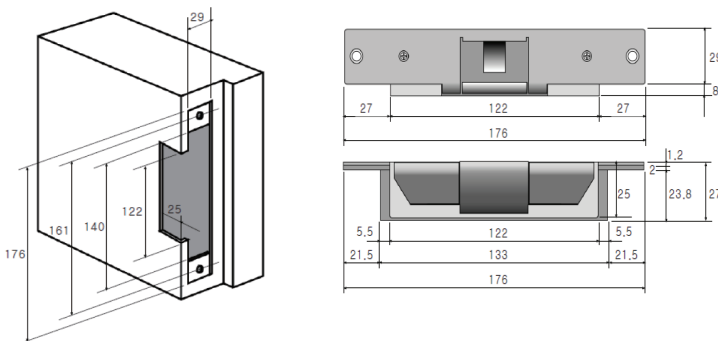
Product synopsis

GS-9000 is the strongest strike with the holding force of 1500kg. The strike is capable of operating with up to 25kg of pre-load pressure applied to the keeper.

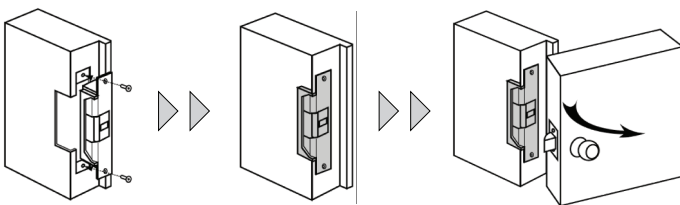
GS-9000



■ Dimensions



■ How to install



■ Specifications

Item	Spec
Voltage/Current	12VDC, 5.50 mA 24VDC, 2.75 mA
Door monitoring switch	COM, NO
Locking monitoring S/W	COM, NO

■ Main Features

- Fail safe and fail secure (changeable on site)
- Ability to operate with up to 25kg of pre-load pressure on the keeper.
- Door monitoring system (COM, NO, NC)
- Stronger security (Hook type, thicker body)
- Holding force (1500kg)
- Stainless steel body

■ Size & Weight

- Size : 176(L)x 29(W)x 27(D)mm
- Weight : 10Kg

■ CE Approved

■ Wiring

Item		Section
Solenoid	Power supply	DC 12V, (Red), (White)
		DC 24V, (Red), (Black)
Door monitoring (DS)	N.O	Orange
	COM	Gray
Strike monitoring	N.C	Green
	N.O	Purple
	COM	Yellow